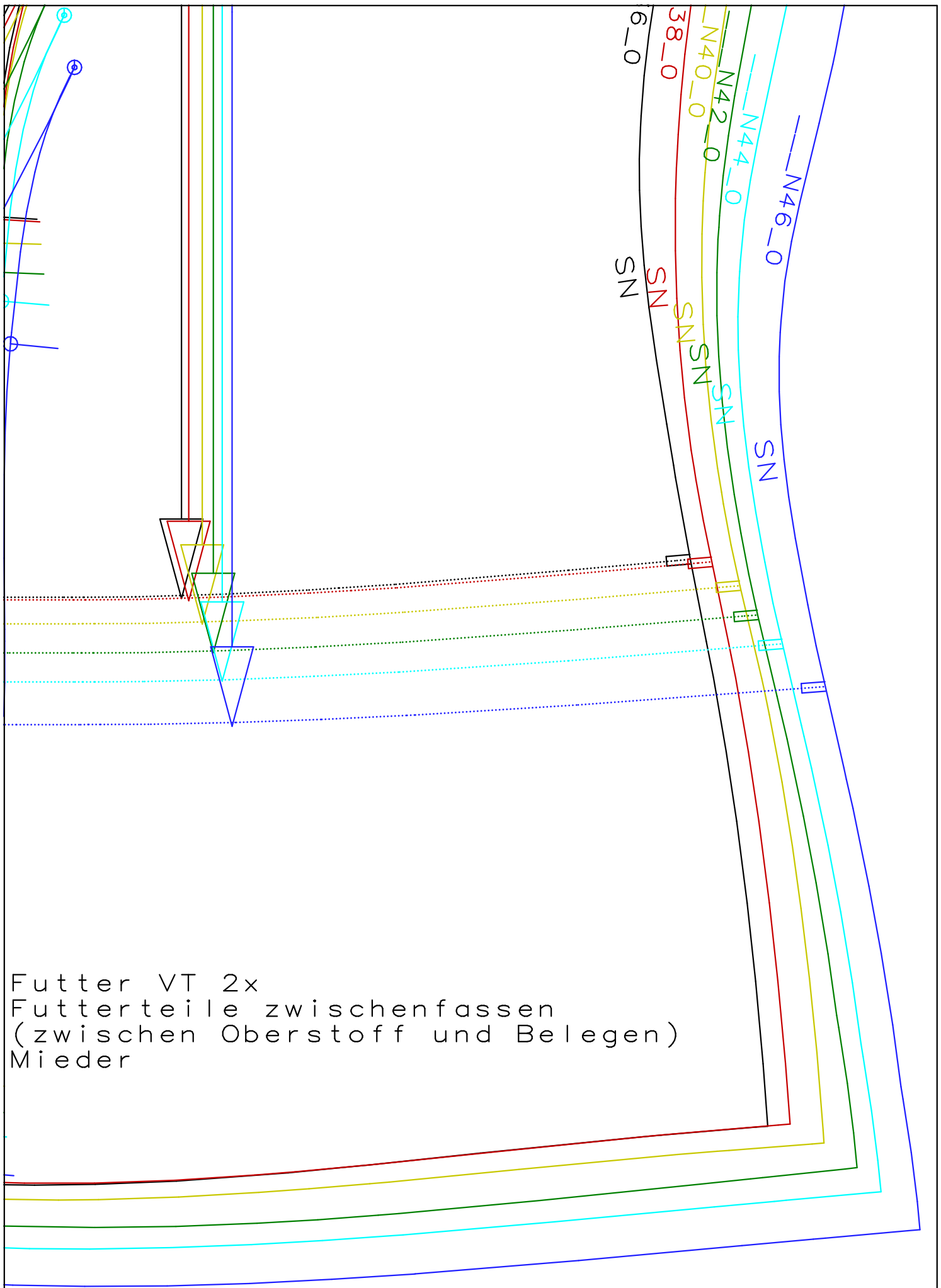


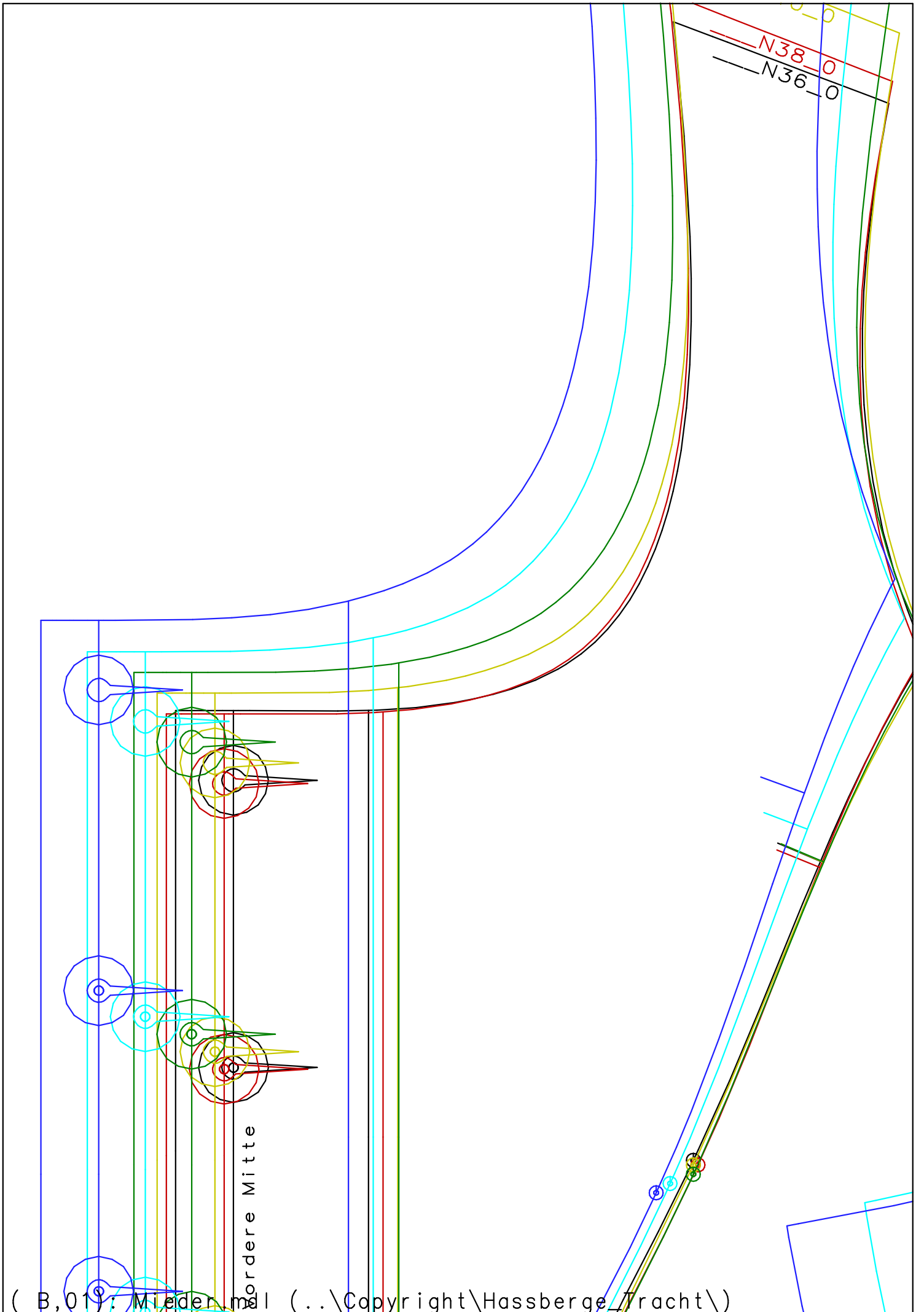


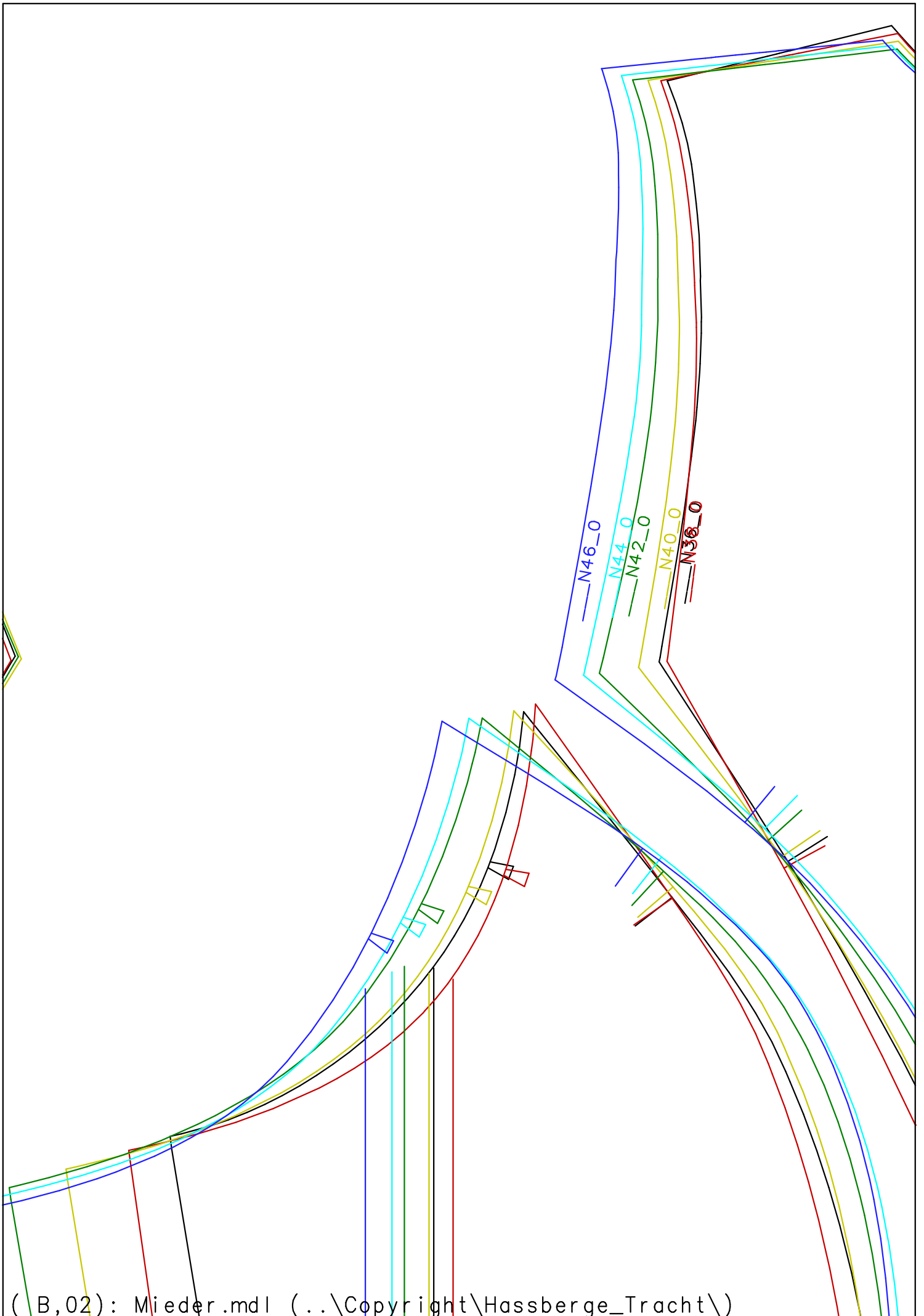
Vordere Mi



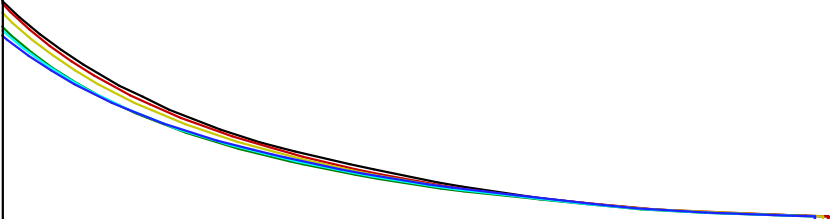


Futter VT 2x
 Futterteile zwischenfassen
 (zwischen Oberstoff und Belegen)
 Mieder



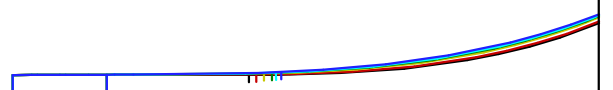
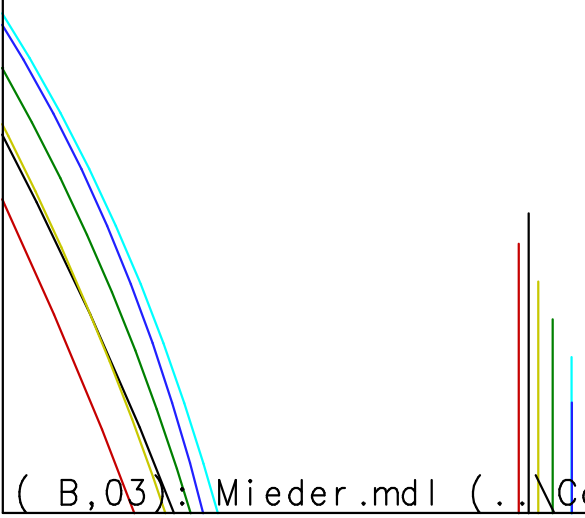


(B,02): Mieder.mdl (..\Copyright\Hassberge_Tracht\)

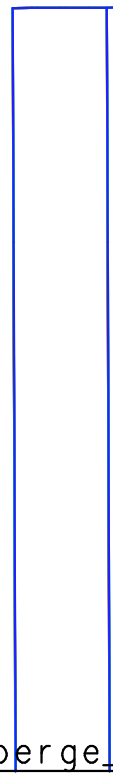


mRT 2x/2xFutter
Mieder

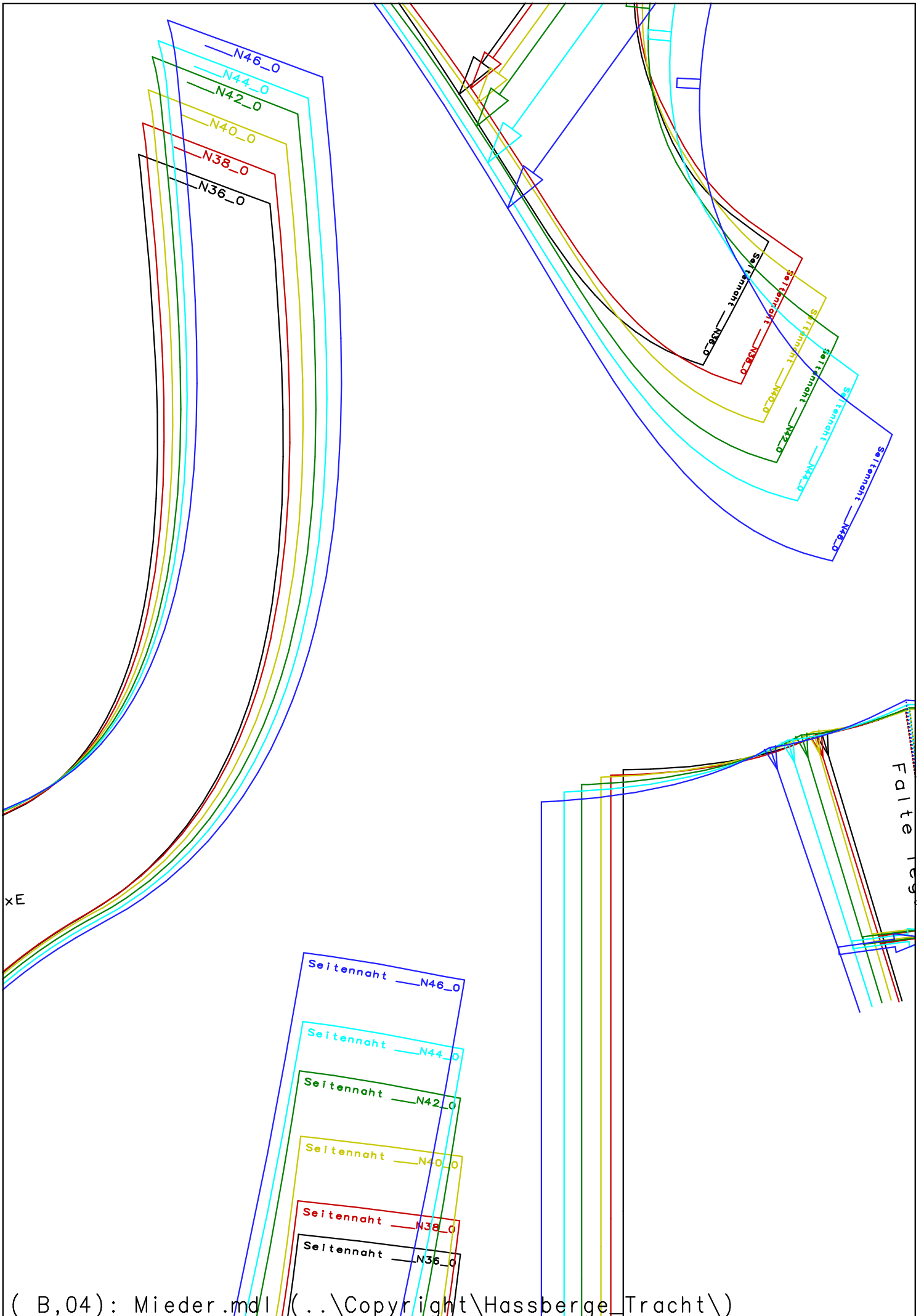
HM Naht



Beleg VT+Hals 2x/2
Mieder



te

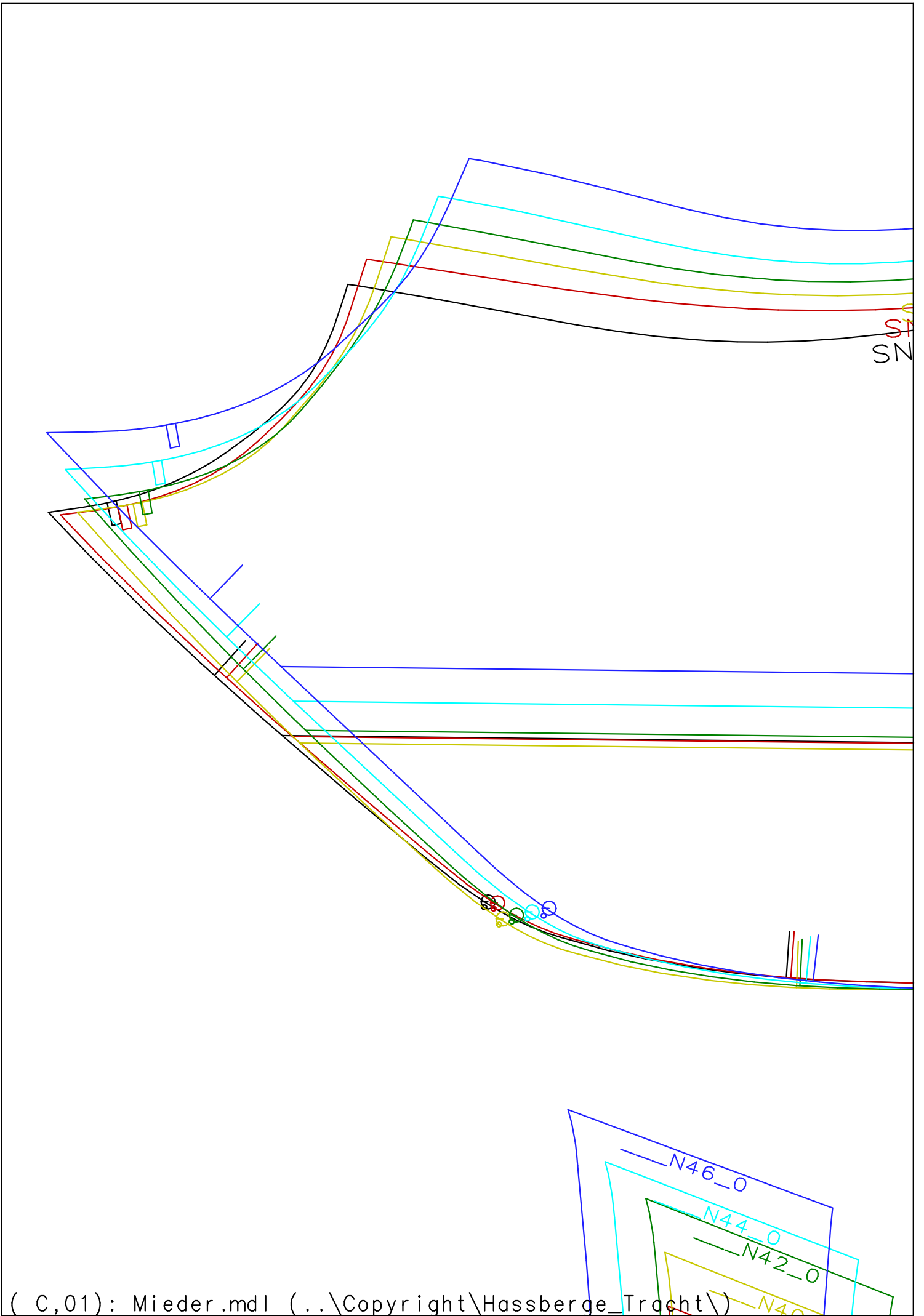


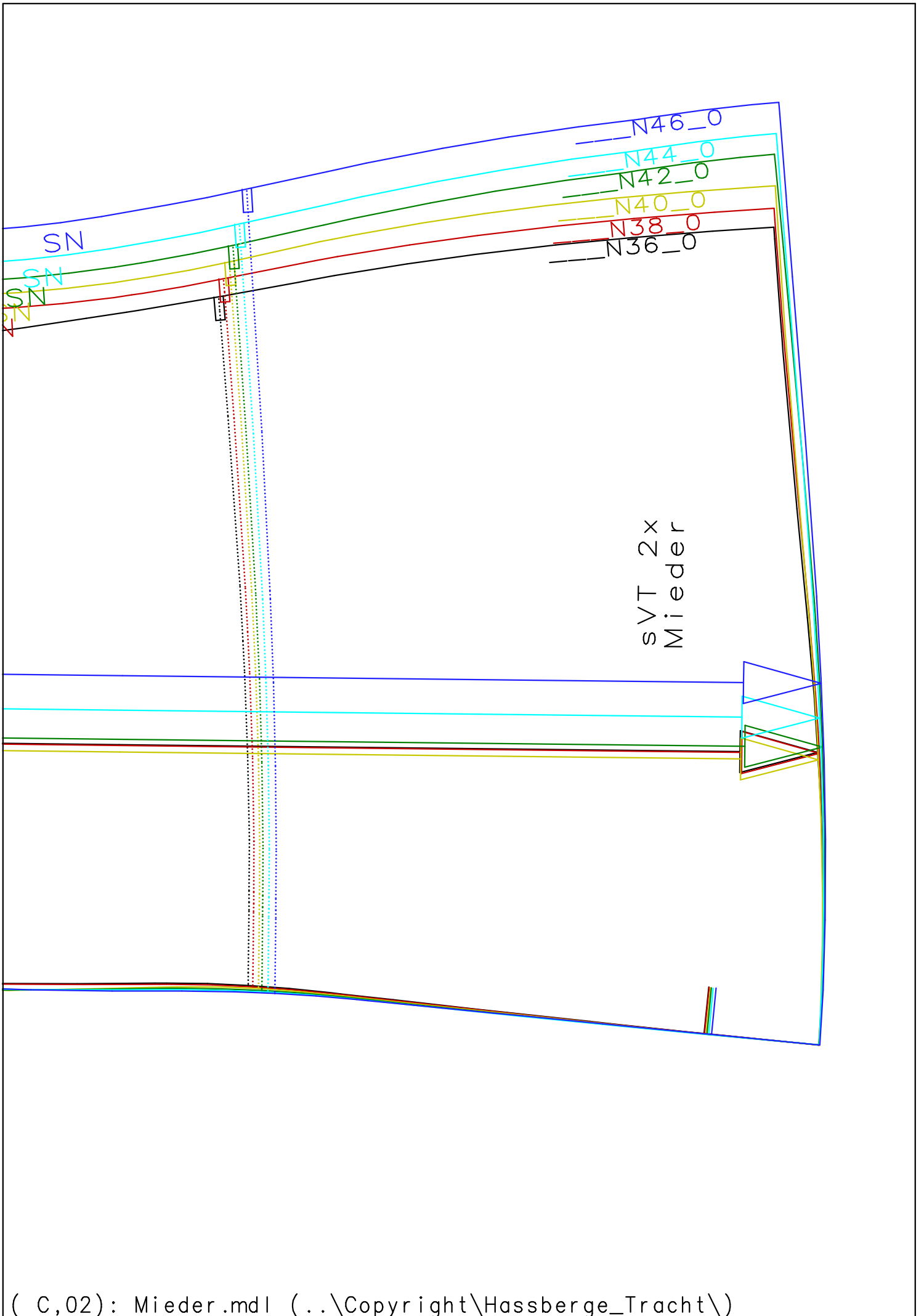


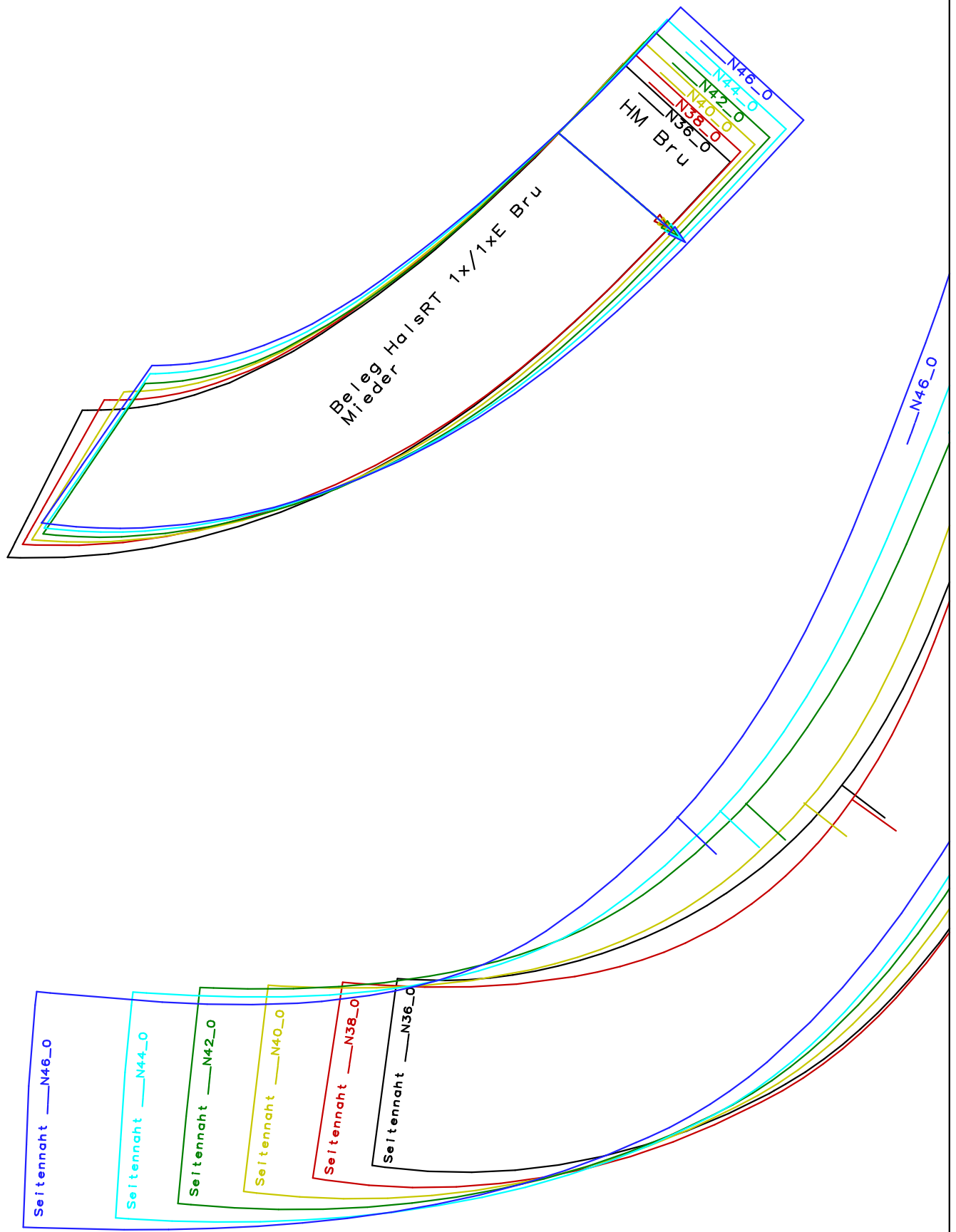
saent

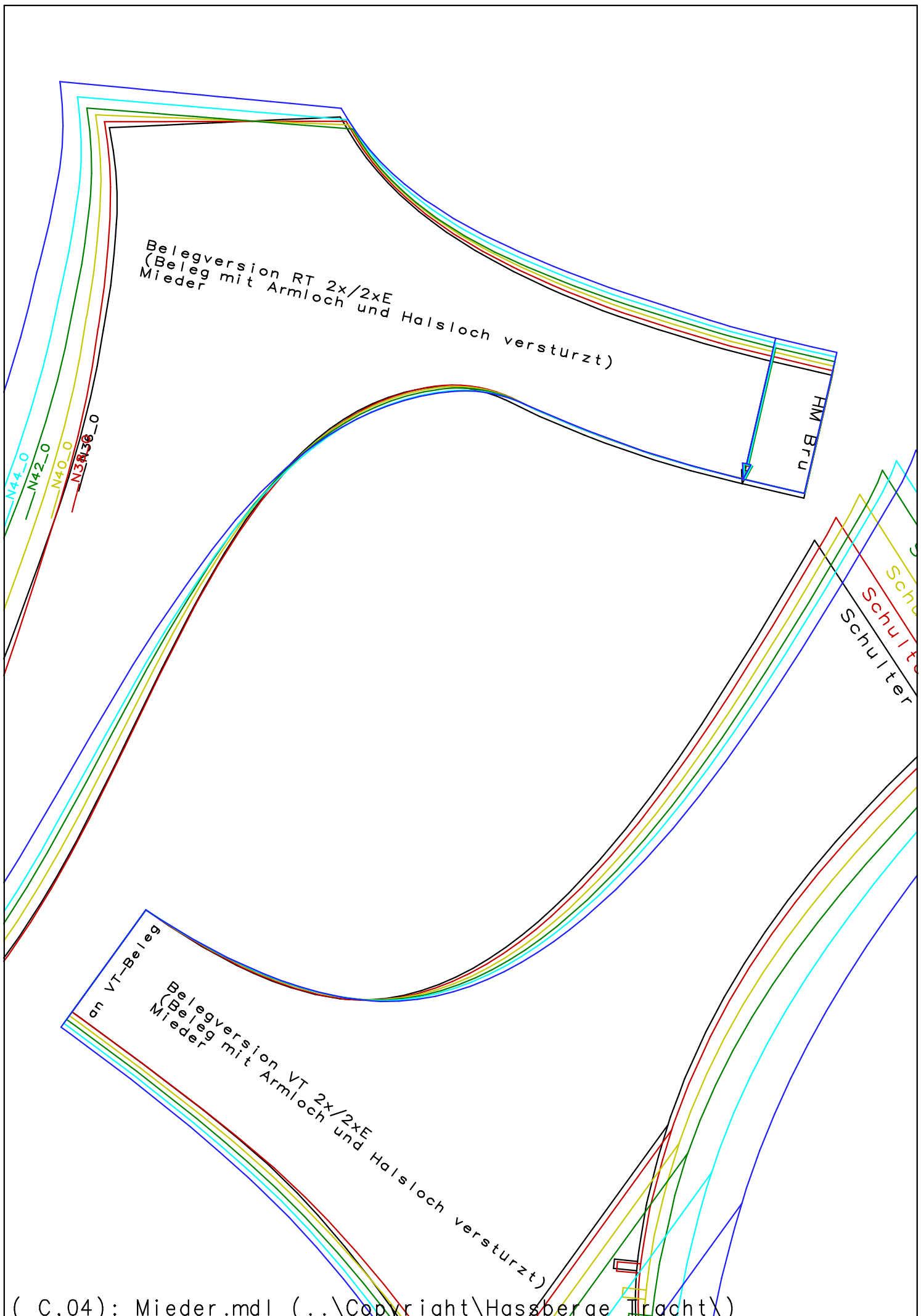
(B,05): Mieder.mdl (...\\Copyright\\Hassberge_\\dracht\\)











Belegversion RT 2x/2xE
(Beleg mit Armloch und Halsloch verstorzt)

HM Bru

N44_0
N42_0
N40_0
N38_0

Schulter
Schulter
Schulter

an VT-Beleg
Belegversion VT 2x/2xE
(Beleg mit Armloch und Halsloch verstorzt)

